

DR. HAROLD GRIER DOCTORAL SCHOLAR'S PROGRAM

2020-2021 ANNUAL REPORT



PROGRAM INFORMATION

The Dr. Harold Grier Doctoral Scholars Program supports racially underrepresented Ph.D. students throughout their Doctoral Program at Mississippi State University. Sponsored by the Office of the Provost and Executive Vice President, the Office of Institutional Diversity and Inclusion, and the Office of the Graduate School, the program provides financial, professional and academic assistance for scholars throughout their academic career at Mississippi State University.

CURRENT DOCTORAL SCHOLARS



CHIQUITA PRICE
Environmental Toxicology
August 2018 Cohort



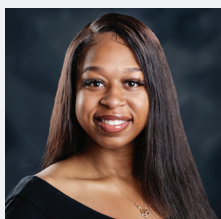
ANISHA THOMAS
Clinical Psychology
August 2018 Cohort



DEEPALI DHRUVE
Clinical Psychology
August 2019 Cohort



BRITANY "BRIA" YOUNG
Sociology
August 2019 Cohort



ALEXIS JACKSON
Counselor Education
August 2020 Cohort

PAST DOCTORAL SCHOLARS



EBONI SMITH, PH.D.
Industrial and Systems Engineering
August 2018 Cohort
Completed: Fall 2019



CHARTESE JONES, PH.D.
Mathematical Sciences
August 2019 Cohort
Completed: Spring 2020



JAYMES DURRISEAU, PH.D.
Cognitive Science
August 2019 Cohort
Completed: Summer 2020



MISSISSIPPI STATE
UNIVERSITY™

OFFICE OF INSTITUTIONAL
DIVERSITY AND INCLUSION

OIDI.MSSTATE.EDU

PAST EVENTS AND GUEST SPEAKER SERIES



KNOWING HOW/WHY TO SAY NO

October 14, 2020

FACILITATOR: DR. JERVETTE WARD

Associate Professor

Department of English, Mississippi State University



NAVIGATING THE PH.D. PROCESS AS AN URM

March 16, 2021

FACILITATOR: DR. QIANA CUTTS

Assistant Professor

Department of Counseling, Educational Psychology and Foundations, Mississippi State University



INFORMAL MENTORING SESSIONS

September 29, 2020

FACILITATORS:

DR. LASHAN SIMPSON

Associate Professor

Department of Agricultural and Biological Engineering, Mississippi State University



DR. ANTONIO GARDNER

Assistant Professor

Department of Food Science, Nutrition and Health Promotion, Mississippi State University

MCNAIR AND SREB SCHOLAR MIXER

March 4, 2021 and September 18, 2020

Hosted by the Office of the Graduate School & The Office of Institutional Diversity and Inclusion

THE INSTITUTE ON TEACHING AND MENTORING

The Institute on Teaching and Mentoring is the largest gathering of underrepresented minority Ph.D. scholars in the country. For the last 27 years, the Institute has provided workshops, recruitment and networking opportunities to enhance the professional development of the Ph.D. scholars with effective tools to be successful as faculty in post-secondary institutions and other appropriate professions. The goal of the Institute is to provide a safe environment for doctoral scholars to share insights and survival tips for success in graduate work, build community among themselves, enrich their research and teaching strategies, and give scholars the skills that will serve them in the profession of their choice.

- Alexandria, VA (October 2018)
- Atlanta, Georgia (October 2019)
- Tampa, Florida (October 2020) – Postponed Due to COVID-19
- Virtual Conference (April 2021)

STUDENT ACCOMPLISHMENTS



ANISHA THOMAS

Dissertation:

A Test of the Interpersonal Theory of Suicide in Black College Students Using Multigroup Confirmatory Factor Analysis

Status: Proposed September 2020

Fellowships:

American Psychological Association's Minority Fellowship Program Mental Health and Substance Abuse Services (MHSAS) Predoctoral Fellowship (2019-Present).

The APA MFP is a comprehensive training, mentoring, and professional development program that supports the training of practitioners who are committed to addressing the behavioral health needs of racial and ethnic minority populations through behavioral health services, policy, and prevention.

Published Manuscripts:

Thomas, A.L. & Brausch, A.M. (2020). Family and peer support moderates the relationship between distress tolerance and suicide risk in Black college students. *Journal of American College Health*, DOI: 10.1080/07448481.2020.1786096

Conference Presentations:

Thomas, A.L., Pate, A.R., & Nadorff, M. (accepted). Suicide risk, psychological well-being, and race-related stress among Black college students. Paper to be presented at the 54th Annual Conference of the American Association for Suicidology.

Pate, A.R., **Thomas, A.L.**, & Nadorff, M. (submitted). Feeling in control: Impact of sense of mastery on suicidal thoughts and behaviors among sexual minority individuals. Paper submitted to the American Association for Suicidology 54th Annual Conference.

Thomas, A.L. & Brausch, A.M. (2020). Family and peer support moderate the relationship between distress tolerance and suicide risk in Black College Students. Poster presented at the Association for Behavioral and Cognitive Therapies' 53rd Annual Conference.

Pate, A.R., **Thomas, A.L.**, & Nadorff, M. (2020). Sexual orientation-based victimization and suicidality: How race matters. Poster presented to the Sexual and Gender Minority Special Interest Group at the Association for Behavioral and Cognitive Therapies' 53rd Annual Conference.

Bolstad, C., **Thomas, A.L.**, & Nadorff, M. (2019). The early bird gets the worm, not anxiety or depression: How insomnia symptoms predict anxiety and depression. Paper presented at the Gerontological Society of America's Annual Scientific Meeting, Austin, TX.

Bolstad, C., **Thomas, A.L.**, & Nadorff, M. (2019). The early bird gets the worm, not anxiety or depression: How insomnia symptoms predict anxiety and depression. Paper presented at the MSU Graduate Research Symposium, Mississippi State, MS.

Thomas, A.L. & Brausch, A.M. (2019). Social Support as a Moderator of Distress Tolerance and Self-Directed Violence among Black College Students. Poster presented at the annual meeting of the International Society for the Study of Self-Injury conference, Orlando, FL.





Published Manuscripts: (* co-authors):

Klemfuss, J.Z., Slonecker, E.M., Akhavein, K.*, **Dhruve, D.M.*** (2021). Cultural, Ideological, and Valence-based Differences in Caregiver Reminiscing Goals. *Memory*.

Oral Presentations:

Dhruve, D.M. (2020, November). Case Conference. MSU Psychology Department Brown Bag. Virtual.

Dhruve, D.M., Oliveros, A. (2020, October). Intergenerational Transmission of Psychological Aggression in Male Parent-Child Dyads: Role of Emotion Regulation and Parental Emotional Availability. Mississippi State University Graduate Student Research Symposium. Virtual. Won second place prize.

Dhruve, D.M., Oliveros, A. (2020, August). Child abuse and neglect associated with self-harm behavior: Role of emotion regulation and perceived social support. International Organization of Social Sciences and Behavioral Research Conference. Virtual.

Poster Presentations:

(** *undergrad mentee*, *** *graduate mentee*)

Dhruve, D.M., Oliveros, A. (accepted; 2021, April). Family violence in childhood and current intimate partner violence: Role of emotions and drinking. Society for Research in Child Development Biennial Meeting. Virtual.

Russo, J.***, **Dhruve, D.M.**, Oliveros, A. (accepted; 2021, April). Trauma Exposure and Non-Suicidal Self-Injury: the Role of Developmental Timing. Society for Research in Child Development Biennial Meeting. Virtual.

Dhruve, D.M., Oliveros, A. (2020, February). Depressogenic Role of Betrayal Trauma: A Moderated Moderation by Emotion Dysregulation and Perceived Social Support Society for Personality and Social Psychology Pre-conference. Emotion Special Interest Group, New Orleans, LA.

Corbell, M.**, **Dhruve, D.M.**, Oliveros, A. (2020, February). Intergenerational Transmission of Psychological Aggression in Same-Sex Parent-Child Dyads. Society for Personality and Social Psychology Pre-conference, Emotion Special Interest Group. New Orleans, LA.

Lowery, A.**, **Dhruve, D.M.**, Homolka, G**, Oliveros, A., (2020, February). History of Childhood Physical Discipline and Risky Drinking: The Role of Coping Motives. Society for Personality and Social Psychology Pre-conference. Parenting and Family Dynamics Special Interest Group, New Orleans, LA.

Marri, R.**, Lowery, A.**, **Dhruve, D.M.**, Oliveros, A., (2020, February). The Effect of Authoritarian Parenting on the Perpetration of Psychological Abuse in Current Romantic Relationships as Mediated by Emotion Regulation. Society for Personality and Social Psychology Pre-conference. Parenting and Family Dynamics Special Interest Group, New Orleans, LA.

Marri, R.**, Lowery, A.**, **Dhruve, D.M.**, Oliveros, A., (2020, February). The Effect of Authoritarian Parenting on the Perpetration of Psychological Abuse in Current Romantic Relationships as Mediated by Emotion Regulation. Society for Personality and Social Psychology Conference, New Orleans, LA.

Dhruve, D.M., DiCarlo, S., Oliveros, A., (2019, September). History of Potentially Traumatic Events Predict Current Depressive Symptoms: Testing the Impact of Emotion Regulation Difficulties and Perceived Social Support. Mississippi Psychological Association, Biloxi, MS.

DiCarlo, S., **Dhruve, D.M.**, Oliveros, A., (2019, September). Do race and perceived social status moderate the relation between lifetime trauma exposure and depressive symptoms? Mississippi Psychological Association, Biloxi, MS.

Dhruve, D.M.*, Akhavein, K.*, Slonecker, E.M., Klemfuss, J.Z. (2019, April). Cultural and Ideological Differences in Self-Reported Caregiver Reminiscing Goals. Western Psychological Association, Pasadena, CA.

Awards:

Student Travel and Research Award, August 2020
Department of Psychology, Mississippi State University | \$225

Student Travel and Research Award, February 2020
Department of Psychology, Mississippi State University | \$400

Graduate Student Travel Support Award, February 2020
College of Arts and Sciences, Mississippi State University | \$400

Student Travel and Research Award, September 2019
Department of Psychology, Mississippi State University | \$116

Student Travel Award, September 2019
Mississippi Psychological Association | \$125

Proposed Thesis: November 2020
Plans to Defend this Spring 2021

ALEXIS JACKSON

Published Manuscripts:

Jackson, A., Holmes, C., Looby, J., Blakely, K., (2021). Therapeutic Interventions with Families of Breast Cancer Survivors. *Journal of Feminist Family Therapy*. <https://doi.org/10.1080/08952833.2021.1872268>

Holmes, C., **Jackson, A.**, Looby, J., Gallo, K., & Blakely, K. (2021). Breast Cancer and Body Image: Feminist Therapy Principles and Interventions. *Journal of Feminist Family Therapy*. <https://doi.org/10.1080/08952833.2021.1872266>

Dermer, S., Abdullah, J., & **Jackson, A.** (2020). Social Justice as Fifth Force in Counseling. SAGE Reference Project. *The SAGE Encyclopedia of Multicultural Counseling, Social Justice, and Advocacy*. (Accepted – Publication Pending).

Dermer, S., Abdullah, J., & **Jackson, A.** (2020). Sexual Violence and Diversity. SAGE Reference Project. *The SAGE Encyclopedia of Multicultural Counseling, Social Justice, and Advocacy*. (Accepted – Publication Pending).



Counseling Intern at the Baptist Behavioral Health Hospital Unit – August 2020-Present *Baptist Memorial Hospital Columbus, MS*

- Conduct Biopsychosocial assessments to gain a better understanding of patients' insights, ideations, moods, affects, orientations, hallucinations, delusions, family histories of mental illness, addictions, treatment histories, and substance abuse.
- Conduct Group Counseling Session
- Conduct Individual Counseling Session
- Conduct Family Counseling Sessions
- Facilitate Referrals and Consultations
- Participate in staffing with a psychiatric care team, which encompasses psychiatrists, nurses, counselors, and social works as a means to develop treatment plans and monitor the impacts of medications on patients.

CHIQUITA PRICE

Awards:

Supplement to Promote Diversity in Health-Related Research by the National Institute of Neurological Disorders and Stroke

Leadership:

GSA

- Departmental Student Representative
 - College of Veterinary Medicine Student Representative
- Graduate Program Advisory Committee
- Student Liason

Spearheaded a subset of GSA in my college (CVM GSA) to foster unity and inclusion among the CVM graduate students

Service:

- Panelist at Mississippi Delta Community College's Girls Rock Conference
- Speaker for the Society of Toxicology's annual ToxScholar outreach program at Mississippi University for Women

